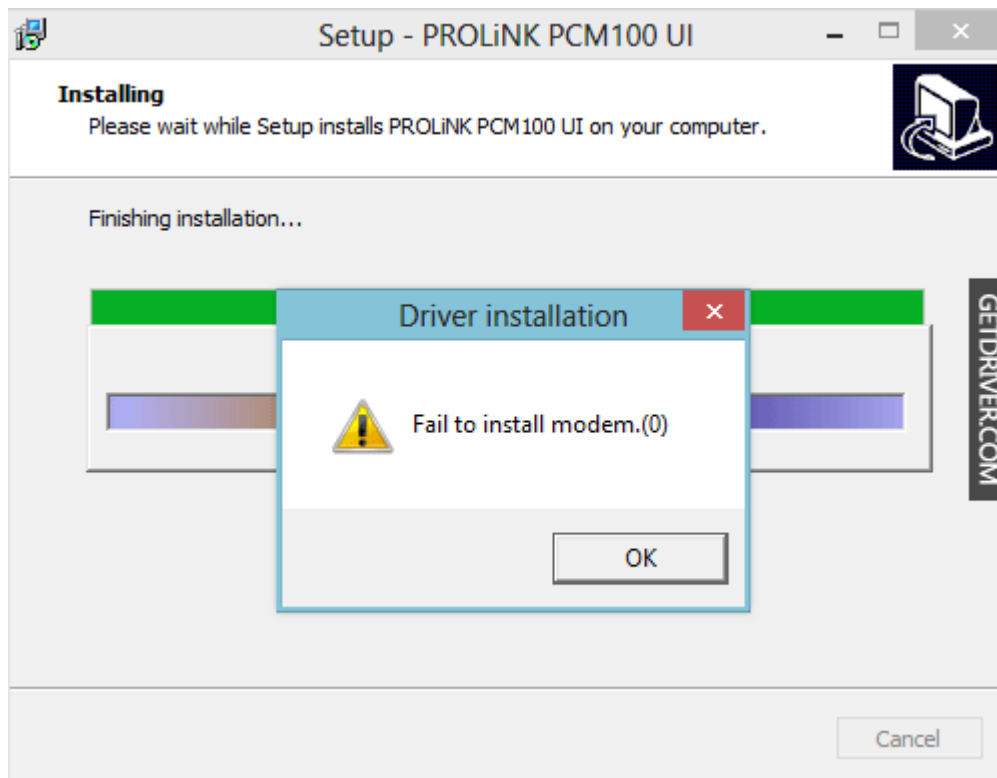


How to Make Windows 7 Drivers Work on Windows 8/8.1 (INF Modding)

Windows 8 has been officially launched and the most common problems that are encountered when you use a new OS are related to driver compatibility issues. Some drivers do not support Windows 8 and when you force to install the driver, Windows 8 will reject it. Different with previous versions of windows, the regulation of the drivers on Windows 8 is very tight, and you need more effort when you install a driver that does not officially support Windows 8. This time I will share my experience installing driver from a Prolink PCM100 USB Modem on Windows 8.

A few weeks ago I tried to install a driver from Prolink PCM100 on Windows 8 RTM x64. I used the “*compatibility mode*” on the setup.exe file and install it normally. After that I checked in the Device Manager and found the device status was “*unknown device*” then I tried to update the driver manually (still in the device manager) using the “.inf” file and the Windows 8 RTM accepted the “.inf” file, though the file is designed only for Windows 7.

Yesterday I installed the latest version of Windows 8, the Windows 8 Pro x64. Then I tried to install driver from USB Modem PCM100 on that Windows by using the “*compatibility mode*” on the setup.exe file and the installation seemed to run normally, but at the end of the installation process it apparently came out an error message “*Fail to install modem*”.



I tried to check the device manager, there was a device with status “*unknown device*” and then I tried to update the driver manually using the file “.inf” as I did before, and the error message “*Driver is not intended for this platform*” appeared.

Update Driver Software - Unknown Device

Windows encountered a problem installing the driver software for

Windows found driver software for your device but encountered an error while attempting to install it.



PROLiNK PCM100 USB Modem FFF1

Driver is not intended for this platform.

If you know the manufacturer of your device, you can visit its website and check the support section for driver software.

GETDRIVER.COM

Then I tried to edit the “.inf” file using notepad. The entire “**NTia64**” was replaced by “**NTia64.6.2**” and all “**NTamd64**” was replaced by “**NTamd64.6.2**” then I tried to update the driver with the “.inf” file which has been modified and the error message “*The hash for the file is not present in the specific catalog file. The file is likely corrupt or the victim of tampering.*” appears.

UPDATE:

Windows 8.1 x64: Replace “**NTia64**” with “**NTia64.6.3**” and “**NTamd64**” with “**NTamd64.6.3**”

```
[Version]
Signature="$WINDOWS_NT$"
Class=Modem
Provider=%ZTEMT%
CLASSGUID={4D36E96D-E325-11CE-BFC1-08002BE10318}
DriverVer=05/13/2010,2.0.5.6
Catalogfile = ztemtusbser.cat

[Manufacturer]
%ZTEMT%=Models, NTia64, NTamd64

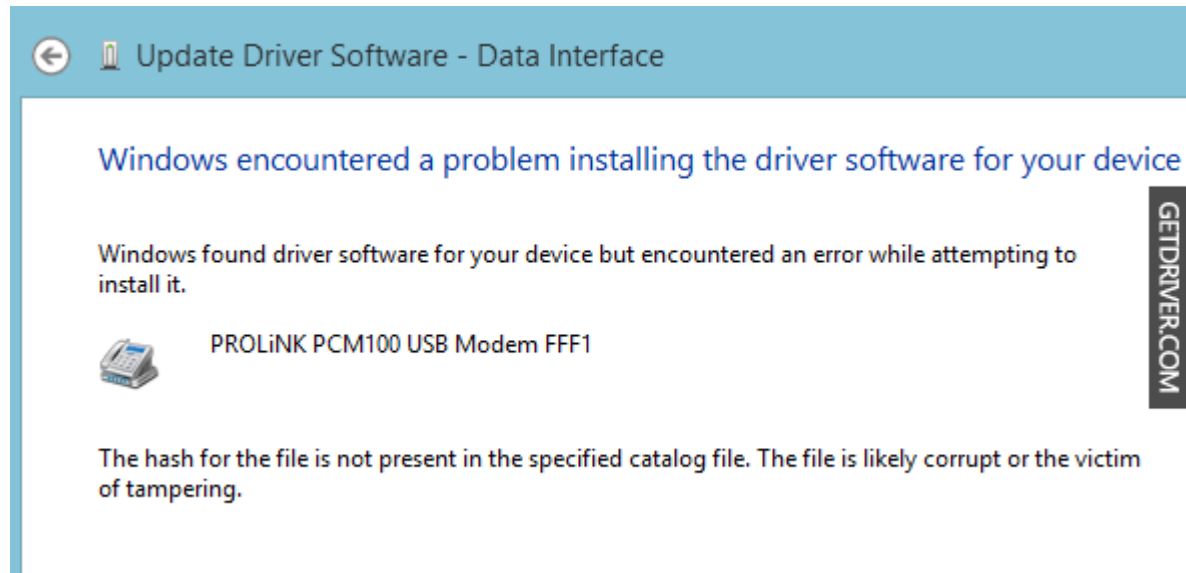
[ControlFlags]
ExcludeFromSelect = *

[SourceDisksNames]
1000 = %ZTEMTSrcDisk%, "", ,

[SourceDisksFiles]
CT_U_USBSER.sys = 1000

[Models]
%ZTEFFFF% = ModemRevA, USB\VID_19D2&PID_FFFF&MI_00
```


%ZTEFFFEF% = Modem2, USB\VID_19D2&PID_FFEF&MI_00
%ZTEFFFEE% = Modem2, USB\VID_19D2&PID_FFE8&MI_00
%ZTEFFFEC% = Modem2, USB\VID_19D2&PID_FFE8&MI_03
%ZTEFFFEA% = Modem2, USB\VID_19D2&PID_FFEA&MI_01
%ZTEFFE9% = Modem2, USB\VID_19D2&PID_FFE9&MI_00
%ZTEFFE8% = Modem2, USB\VID_19D2&PID_FFE8&MI_00
%ZTEFFE7% = Modem2, USB\VID_19D2&PID_FFE7&MI_00
%ZTEFFE4% = Modem2, USB\VID_19D2&PID_FFE4&MI_00



The screenshot shows a Windows error dialog box titled "Update Driver Software - Data Interface". The main message reads: "Windows encountered a problem installing the driver software for your device". Below this, it states: "Windows found driver software for your device but encountered an error while attempting to install it." An icon of a modem is shown next to the text "PROLiNK PCM100 USB Modem FFF1". The error message at the bottom says: "The hash for the file is not present in the specified catalog file. The file is likely corrupt or the victim of tampering." A vertical watermark "GETDRIVER.COM" is visible on the right side of the dialog box.

Apparently the “hash” of “.inf” file was changed because I have edited it and was not in accordance with the Security Catalog file “.cat”. Then I tried to edit the “.inf” file again, this time I tried to give a sign “;” on the line *Catalogfile* so that the statement is no longer used because it is considered as a comment, and then I went back into device manager to try to update the driver again, and I encountered this error “*The third-party INF does not contain digital signature information.*”

```
[Version]
Signature="$WINDOWS NT$"
Class=Modem
Provider=%ZTEMT%
CLASSGUID={4D36E96D-E325-11CE-BFC1-08002BE10318}
DriverVer=05/13/2010,2.0.5.6
;Catalogfile = ztemtusbser.cat
```

Windows encountered a problem installing the driver software for your device

Windows found driver software for your device but encountered an error while attempting to install it.



PROLiNK PCM100 USB Modem FFF1

The third-party INF does not contain digital signature information.

In Windows 7, if you install a driver that does not have digital signature information, then Windows 7 will give us two options: ***“Do not install this driver software / Install this driver any way”***. However, in windows 8 it did not appear that options. I had to restart the computer and press F8 on the dual boot menu or during POST. It would appear the ***“Startup settings”*** menu and then I selected the seventh option ***“Disable driver signature enforcement”***.

Startup Settings

Press a number to choose from the options below:

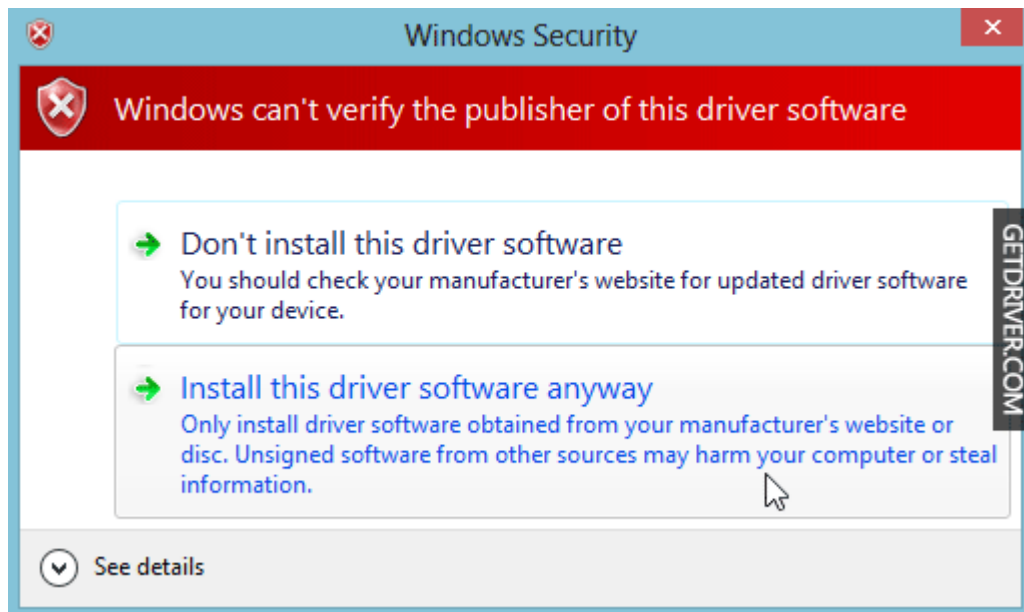
Use number keys or function keys (F1-F9)

- 1) Enable debugging
- 2) Enable boot logging
- 3) Enable low-resolution video
- 4) Enable Safe Mode
- 5) Enable Safe Mode with Networking
- 6) Enable Safe Mode with Command Prompt
- 7) Disable driver signature enforcement
- 8) Disable early launch anti-malware protection
- 9) Disable automatic restart after failure



Press F10 for more options

Press Enter to return to your operating system



When I tried to update the driver from device manager again, eventually a small window appeared with the two choices: ***“Do not install this driver software / Install this driver software any way”***, and I certainly chose ***“Install this driver software any way”*** and successfully, the driver was installed perfectly. I hope my experience is useful for those of you who have driver compatibility issues in Windows 8/8.1.